

aco



Door entry unit

CDN

Door entry units for years

The CDN series is specifically designed for multi-family housing. For years now these units have been in high demand and have enjoyed trust among installers and users. They are particularly appreciated for their reliability, solid workmanship and exceptional resistance to weather conditions and vandalism.

Compact size and timeless style make the units fit perfectly into the classic urban architecture, as well as the widely understood multi-family housing.

Made of aluminium, they come in 3 colour options: steel, graphite and bronze. CDN series units are ideal to put together a large door entry system, supporting up to 255 apartments.





■ An extra advantage of the CDN series is its compatibility with devices of other systems available from us - the Inspiro and Familio lines.

Given this, the door entry system can be constantly expanded, keeping pace with the progress of the investment or the preferences of its inhabitants.

CDN series units have been enjoying great demand and receiving positive feedback from both installers and users.

CDN units.
Chosen and recommended
by installers

Explore the CDN series products

Our CDN series covers 2 digital units.



CDNP7ACC



CDNP6ACC

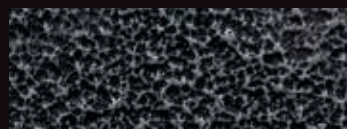
Selected common features of CDN units

- support for multiple expansion modules to increase system functionality
- intuitive and comfortable use and configuration
- option of creating complex Master/Slave/Multimaster entrance systems (only CDN series products)
- control of auxiliary equipment, such as a second gate, a barrier, lighting, roller-blinds or other home automation system via a code lock, a proximity card / key fob or a receiver (only CDN series products)
- option of deploying receivers in several locations, such as kitchen, room, garage (only active receivers and CDN series)
- extensive individual configuration possibilities for each apartment
- audible and optical signalling of panel functions
- individual sound parameter settings
- optional connection of additional audible and optical signalling device for ringing in apartments occupied by disabled persons (only CDN series products)
- further door opening function - automatic door opening for easy access to a building in multi-entrance systems (only CDN series products)
- resistance to weather conditions and vandalism, operating temperature: from -20 to 50°C
- heated LCD display
- option of connecting an external opening button
- control of different E-lock types
- illuminated buttons
- facilities for people with disabilities (including illuminated keyboard buttons in Braille, audible and optical signalling of panel functions)
- audible signalling in apartment of door opening (door opening signal)
- management of proximity cards / key fobs via a PC (with CDN-USB cable)
- adding proximity cards / key fobs via the panel
- built-in second relay output (only CDN master units)
- hotel mode, up to 10 zones (except CDN7ACC)
- doorman function
- compatible with the following series of digital devices: CDNP, Inspiro and Familio P/PV (CDNP only)
- programming selected settings via the panel (service menu) and all settings via a PC and CDN-USB cable
- free software available at support.aco.com.pl

Colours by different models of CDN units



steel (ST)



graphite (GR)



brown (BR)

CDNP7ACC - most technologically advanced product in the CDN series

Discover the additional features it offers:



Explore its strengths

- any number of key fobs per single apartment (from the pool of 6144 key fobs)
- aggregate change of call numbers
- aggregate change of call parameters
- 8 priority numbers
- 5 administrator codes
- adjustable connection time
- adjustable number of openings during connection
- call forwarding for selected additional numbers
- option of activating self-opening for each apartment
- setting access to control of external devices for each apartment
- serial number of the device displayed in a computer program
- support for up to 1020 locations: CDNP7ACC (SW4S) version (additional SW4S-DIN modules required)
- 8 numbers for apartments with the option of setting the calls without conversation



Find out how easily you can expand the functionality of your system

Select the module of your choice and adapt the door entry system to the needs of your investment.

CDN-5N/CDN-5NACC*



CDNVK



CDN-2NP



CDN-230E



CDN-6N/CDN-6NACC*



CDN-6NP



CDNP7ACC



CDN-17N/CDN-17NACC*



CDN-10NP



CDN-ACC*



* Modules for CDNP6 units. As a standard, the ACC reader is a built-in component for CDNP7ACC and CDNP6ACC units.

Find out how easily you can expand the functionality of your system

Select the module of your choice and adapt the door entry system to the needs of your investment. The modules come in 3 colours.

CDNVK module



- high resolution colour camera (min. 600 lines)
- 2.8 mm wide-angle lens
- adjustable camera viewing angle +/- 20° horizontally
- perfect image day and night
- infrared LED backlight
- only CDNP units

CDN-230E module (LCD display)



- electronic alphabetical list of residents
- up to 255 apartments supported
- up to 1020 apartments supported with CDNP7ACC (SW4S)
 - only: CDN-230E V2
- alphabetical call function for quick resident finding
 - only: CDN-230E V2

Reader



CDN-ACC module:

- 125 kHz proximity key fob and card reader
- 1536 supported proximity elements
- up to 255 apartments supported
- intended for: CDNP6

ACC module built-in - CDNP6ACC:

- Unique 125 kHz proximity key fob reader
- 1536 supported key fobs
- up to 255 apartments supported

ACC module built-in - CDNP7ACC:

- Unique 125 kHz proximity key fob reader
- 6144 supported key fobs
- up to 255 apartments supported

Tenants' list with no call button



CDN-5N, CDN-6N, CDN-17N modules

- backlit tenants' lists
- for approximately 5, 10, 17 entries respectively

CDN-5NACC, CDN-6NACC, CDN-17NACC modules:

- backlit tenants' lists
- for approximately 5, 10, 17 entries respectively
- integrated key fob and proximity card reader (features of CDN-ACC module) - dedicated for CDNP6 units

Tenants' list with call button



CDN-2NP, CDN-6NP, CDN-10NP modules:

- backlit tenants' lists
- 2, 6, 10 direct dialling buttons respectively

Embossed Braille characters



- Only for numeric unit keypad
- available as an option / on request

Comparison of CDN features

COMPARISON TABLE FOR CDNP UNITS

	CDNP7ACC	CDNP6ACC	CDNP6
Powder-coated aluminium alloy housing	■	■	■
Flat housing front flush with the mounting frame	■		
Heated LCD display	■	■	■
Illuminated stainless steel keypad buttons, optionally embossed with Braille characters	■	■	■
Additional rear plastic housing to secure electronics	■		
Different languages of the displayed messages (PL/EN by default; other languages available optionally on request)	■	■	■
Simple instructions for use of the unit on the housing		■	■
Maximum number of supported addresses ¹	255 lub 1020 ¹	255	255
Maximum number of digits in apartment number	6	3	3
Built-in code lock function for door opening	■	■	■
Number of tenant codes (4 digits)	1020	255	255
Number of administrator codes (4 or 6 digits)	5	1	1
Built-in second relay output F2 (for master units only)	■	■	■
Built-in 125 kHz ACC Unique proximity key fob reader	■	■	
- Maximum number of supported proximity key fobs	6144	1536	
- Maximum number of proximity key fobs assigned to one apartment	6144	6	
- Maximum number of key fobs from the pool for administrator access, not assigned to apartments 1-255	6144	6	
CDN-xACC Unique 125 kHz series external proximity card and key fob reader module supported			■
Maximum number of supported cards and key fobs - external reader, CDN-xACC series			1536
Maximum number of cards and key fobs assigned to one apartment from the available pool, CDN-xACC series			6
Maximum number of cards and key fobs from the pool for administrator access, not assigned to apartments 1-255, CDN-xACC series reader			6
Adjustable e-lock operating time	■	■	■
Audible and optical signalling of panel functions (facilities for people with disabilities)	■	■	■
Extensive individual configuration possibilities for each apartment	■	■	■
Adjustable connection time	40 s - 120 s		
Adjustable number of openings during a conversation (from 1 to 3)	■		
Number of apartments with auto-opening option	1020	2	2
Aggregate change of number range and ringing parameters (via an intuitive computer program)	■		
Audible and optical signalling at the premises for people with disabilities (CDN-U add-on module required)	■	■	■
Number of apartments with the option of setting the calls without conversation	8	2	2
Option to connect multiple receivers under the same call number (only active receivers)	■	■	■
Enabling or disabling access to control of external devices for each apartment	■		
Additional "priority" numbers with individual settings of calling parameters	8	2	2
Call forwarding for selected additional numbers	■		
Option of connecting an external opening button	■	■	■
Audible signalling in apartment about door opening – with code or key fob / proximity card (door opening signal)	■	■	■
Operation in complex Master/Slave/Multimaster multi-user systems	■	■	■
Support for multiple expansion modules to increase system functionality	■	■	■
Control of additional devices, such as second gate, barrier, lighting, roller blinds or other home automation	■	■	■
Control of additional devices via a code lock, proximity card / key fob or receiver	■	■	■
Further door opening function	■	■	■
Doorman	■	■	■
Option to type a 6-character display text during doorman's call forward	■		
Control of different E-lock and magnetic keeper types (in some cases an additional CDN-PK module is required)	■	■	■
Opening an E-lock or additional relay output F2 without having to call and connect to apartment	■	■	■
Serial number of the device displayed in a computer program	■		
Compatible with the following series of digital devices: CDNP, INSPIRO and FAMILIO P/PV	■	■	■
Dedicated mounting frames with handles to conveniently hang the panel during installation	■		
Number of wires to audio receivers (installation type)	2-wire	2-wire	2-wire
Option to install video receivers (using additional modules: cameras, combiners, splitters)	Yes ³	Yes ³	Yes ³
Max. line length up to 1000 m (using appropriate cable cross-sections)	■	■	■
Output for direct connection of an E-lock	■	■	■
Power supply 11.5VAC (audio) or 15VDC (audio or video)	■	■	■
Via a PC (optional CDN-USB interface required)	■	■	■
Directly at the unit (service menu)	Restricted to certain functions	■	■
Full proximity key fob management via a PC (optional CDN-USB interface required)	■	■	■
Proximity key fobs management directly at the unit (service menu)	Adding only	■	■
Free software available in "downloads" section - at support.aco.com.pl	■	■	■

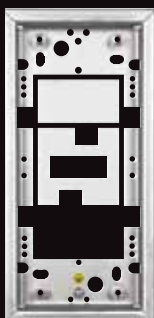
1) 1020 available for special version for additionally required SW4S-DIN module

2) including 1 dedicated wire per receiver

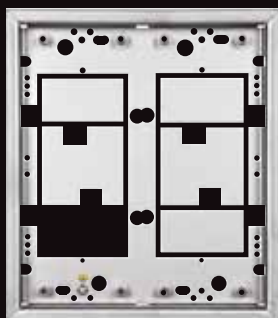
3) required UTP min. cat. 5e

Don't forget about the right frames, mounting boxes and masking frames for your door entry system

CDNP7ACC mounting frames and boxes



CDN-R2-S



CDN-R2-S



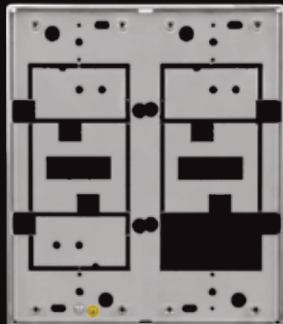
CDN-P2-S NT

INDEX	EXTERNAL DIMENSION	DEDICATED FOR FRAME
CDN-R2-S	229 x 111	210 x 92 x 33,5
CDN-P2-S NT	210 x 92 x 43,5	
CDN-R2-M	290,5 x 111	271,5 x 92 x 33,5
CDN-P2-M NT	274 x 92,5 x 43,5	
CDN-R2-L	352,5 x 111	333,5 x 92 x 33,5 (including 1.5 mm flange)
CDN-P2-L NT	336,5 x 92 x 43,5	
CDN-R2-S2	229 x 200	210 x 181,5 x 33,5
CDN-R2-M2	290,5 x 200	271,5 x 180,5 x 33,5
CDN-R2-L2	352,5 x 200	333,5 x 180,5 x 33,5
CDN-R2-S	229 x 111	210 x 92 x 33,5 (including 1.5 mm flange)
CDN-R2-M	290,5 x 111	271,5 x 92 x 33,5 (including 1.5 mm flange)
CDN-R2-L	352,5 x 111	333,5 x 92 x 33,5 (including 1.5 mm flange)
CDN-PP2-S	220 x 103 x 57	No flange - dimension the same
CDN-PP2-S2	220 x 190 x 57	No flange - dimension the same
CDN-PP2-M	284 x 103 x 57	No flange - dimension the same
CDN-PP2-M2	282 x 192 x 57	No flange - dimension the same
CDN-PP2-L	348 x 103 x 57	No flange - dimension the same
CDN-PP2-L2	348 x 192 x 57	No flange - dimension the same

Mounting frames and boxes for CDNP6ACC



CDN-R-S NT

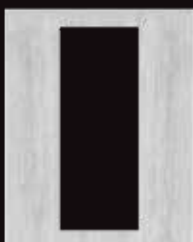


CDN-R-S2 NT



CDN-R-S

INDEX	EXTERNAL DIMENSION	DEDICATED FOR FRAME
CDN-R-S	229 x 111	210 x 92 x 20
CDN-R-S2	229 x 200	210 x 181,5 x 20
CDN-R-M	290,5 x 111	271,5 x 92 x 20
CDN-R-M2	290,5 x 199,5	271,5 x 180,5 x 21,5
CDN-R-L	352 x 111	333 x 92 x 20
CDN-P-S NT	210 x 93 x 29,5	210 x 93 x 29,5
CDN-P-S2 NT	212 x 181 x 29,5	212 x 181 x 29,5
CDN-P-M NT	275 x 93 x 29,5	275 x 93 x 29,5
CDN-P-L NT	333,5 x 93 x 29,5	333,5 x 93 x 29,5



CDNP7ACC

INDEX	EXTERNAL DIMENSION	DEDICATED FOR FRAME
CDN-MZ-S	231 x 113	Masking frames CDN-R2-S
CDN-MZ-M	292,5 x 113	CDN-R2-M
CDN-MZ-L	354,5 x 113	CDN-R2-L

CDNP6ACC

INDEX	EXTERNAL DIMENSION	OPENING SIZE
CDN-M-S	230 x 252	94 x 212
CDN-M-M	230 x 313,5	94 x 273,5
CDN-M-L	230 x 415	94 x 335

Reference photos of selected products. All available models and their dimensions can be found in the tables.

You may choose video version receivers for CDNP panels

Explore all functions and choose the model that is a perfect fit for your needs.

LOUDSPEAKER VIDEO DOOR ENTRY UNITS

MP800 3,5"



PV

INS-MP7 WH



PV

Selected common features

- a clear, colourful, high-quality image
- flat front with touch and illuminated icons
- optical signal for ringing and mute mode
- easy configuration of image parameters
- 7-stage volume control (both ring and call)
- optional call up an image preview at any time
- optional control of additional devices, such as second gate, barrier, lighting, roller blinds or other home automation
- doorbell function (so-called Ring function)
- auto open function - door auto opening at ringing detection
- optional combining of several receivers at one address

Additional features of INS-MP7 WH

- glass front
- 7-inch display
- two colour versions: white (INS-MP7 WH) and black (INS-MP7 BK)
- optional connection of an extra external camera
- automatic activation of the second camera view when the Ring function is being called

HANDSET VIDEO DOOR ENTRY UNITS

INS-MPR 4"



Selected common features

- 4-inch display with adjustable image parameters
- a clear, colourful, high-quality image
- magnetic handset hang-up
- 3-stage ring volume control
- optional call up an image preview at any time
- optional control of additional devices, such as second gate, barrier, lighting, roller blinds or other home automation
- optional connection of an extra external camera
- doorbell function (so-called Ring function)
- automatic activation of the second camera view when the Ring function is being called
- optional combining of several receivers at one address

You may choose audio version receivers for CDPN panels

Explore all functions and choose the model that is a perfect fit for your needs.

LOUDSPEAKER RECEIVERS

UP800



UP800V



HEADSET RECEIVERS

INS-UP720BX



INS-UP



INS-UP720MR



Selected common features

- flat front with touch and illuminated icons
- optical signal for ringing and mute mode
- 7-step volume control (both ringing and call)
- auto open function - door auto opening at ringing detection
- control of additional devices, such as second gate, barrier, lighting, roller blinds or other home automation
- doorbell function (so-called Ring function)
- optional combining of several receivers at one address

Selected common features

- magnetic handset hang-up
- 3-stage ring volume control
- Hold function - hanging up the handset without disconnecting the call (function available in all 720 series models)
- 2 buttons: opening button and functional button to control additional devices, such as second gate, barrier, lighting, roller blinds or other home automation (not available with INS-UP720BX model, which only features one button: for opening)

Optional replacement of UP800V uniphone with 3.5" MP800 video door entry unit after installing a dedicated 3.5" UP800 LCD colour display



Additional features of INS-UP720MR:

- doorbell function (so-called Ring function)
- optical signal for mute mode
- optional combining of several receivers at one address

Dimensions of receivers in mm (W x H x D)

	INS-MP7	MP800	UP800V	UP800	INS-MPR 4"	INS-UP	INS-UP720MR	INS-UP720M	INS-UP720BX
Mounting dimension (base)	237 x 121 x 25	81,5 x 198 x 26,5	81,5 x 198 x 26,5	81,5 x 122,5 x 26,5	104 x 175	81 x 122	80 x 201	80 x 201	80 x 201
Dimension with handset on	Non-handset, loudspeaker units	Non-handset, loudspeaker units	Non-handset, loudspeaker units	Non-handset, loudspeaker units	104 x 284 x 40	81 x 200 x 39	80 x 201 x 45	80 x 201 x 45	80 x 201 x 45



Polish manufacturer of digital system
for door entry units and video door entry units

Aco sp. z o.o. sp. komandytowa
ul. Diamentowa 7, 62-002 Suchy Las, Poland
tel. +48 61 843 93 71

export@aco.com.pl
www.aco.com.pl
support@aco.com.pl

Tax number: 9721258093
REGON: 362759523



field for distributor's stamp